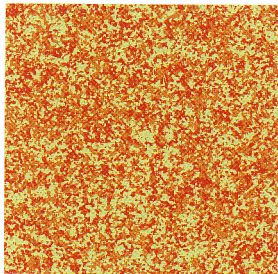
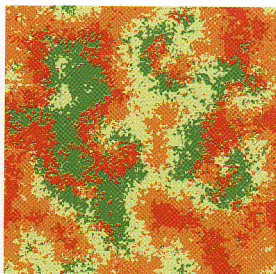


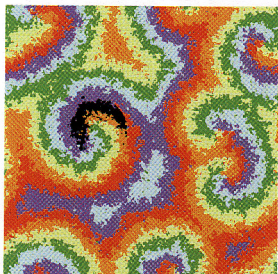
11A



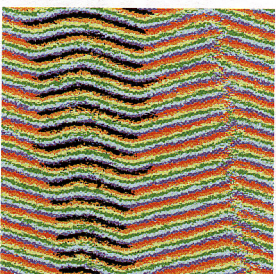
11B



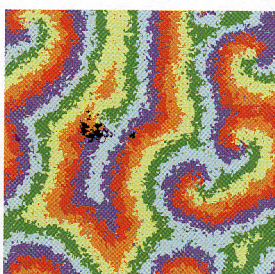
12A



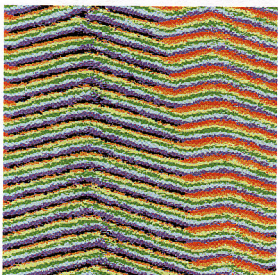
12B



12C



12D



12E

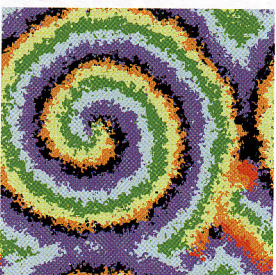


Plate 11. Instability of short hypercycles. **A)** 3 species; **B)** 4 species.

Plate 12. Spiral selection. In plate **A)** a spiral is infected with black mutants. **B), C)** $\text{decay}[\text{mutant}] = 0.15$; **B)** timeplot of a one-dimensional horizontal section through the middle of the field; **C)** situation at $t = 4000$; **D), E)** $\text{decay}[\text{mutant}] = 0.4$; **D)** timeplot of a one-dimensional horizontal section through the middle of the field; **E)** situation at $t = 4000$.